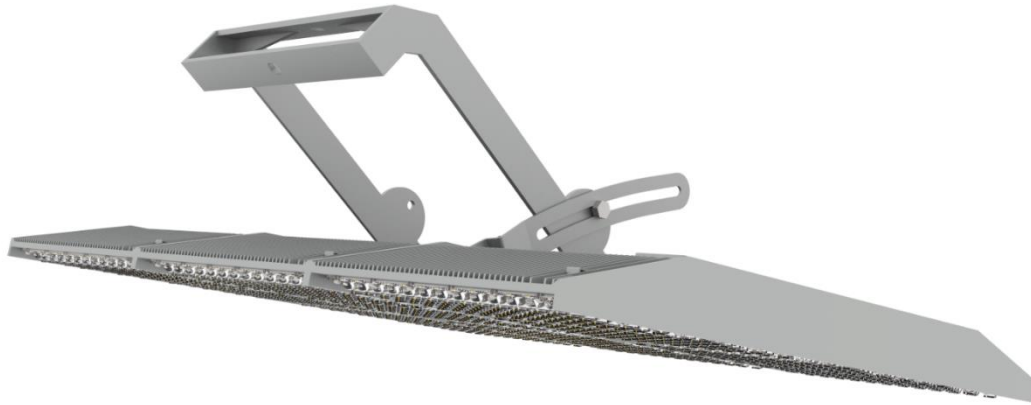


# OLYMPIA



Optics: Lenses S1, S2, S3, S4  
 Material: Aluminum  
 Lightsource: LED, market leading efficiency

OLYMPIA 1, Item.10030 1000W L=620mm W=626mm H=90mm Weight:22,2 kg,143.000lm  
 OLYMPIA 2, Item.10010 2000W L=700mm W=939mm H=90mm Weight:33,4 kg, 286.000lm

Efficiency : 143lm/W real lumen output, avser 4000Kelvin Ra70  
 IP grade: IP66, driver IP67  
 Durability: IK08  
 Electrical safety class: I EU

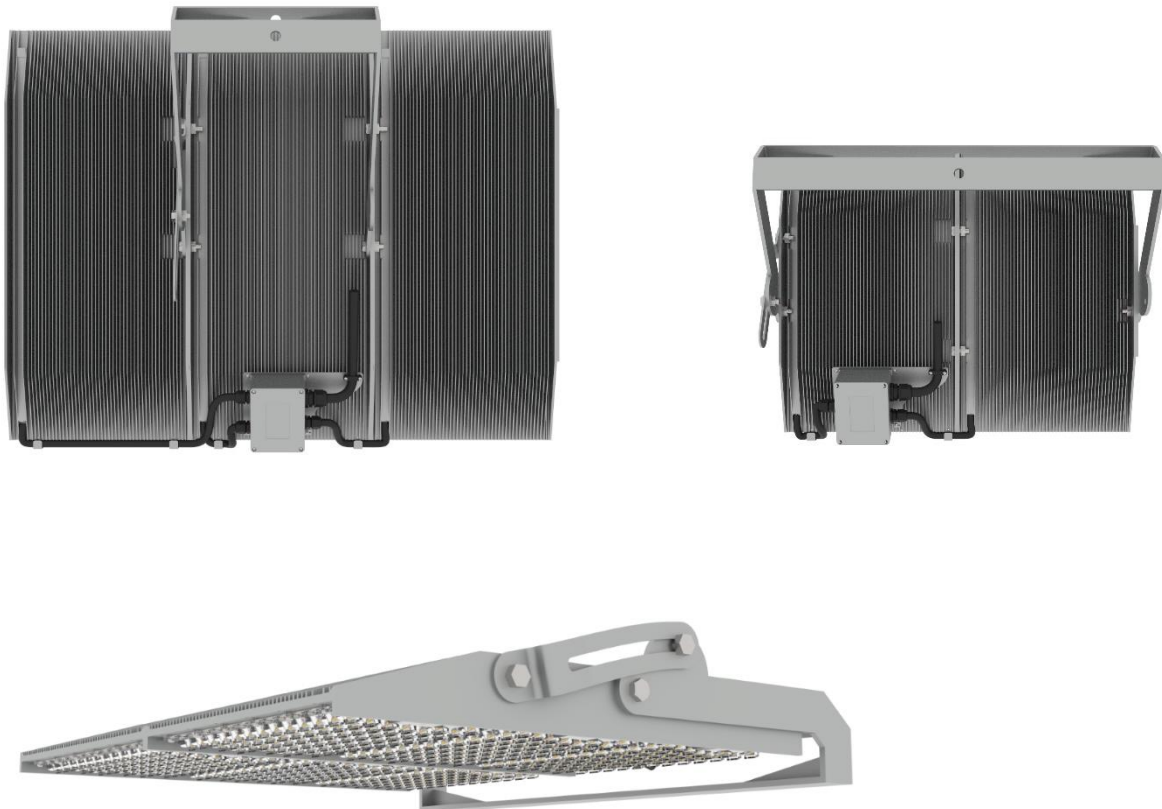
## AREAS OF USE

- Football, larger and smaller arenas
- Large and small outdoor areas
- High-precision surfaces, high demands
- Sports
- Airports
- Ports
- Parking spaces
- High masts
- Downward alt. horizontal light

One of the market's best and most powerful luminaires with newly developed advanced lighting technology, electronics and innovative details that is exceptional. How unique this luminaire is will be shown both in our offer to you as a customer and in the final end result and use. During the development and in the standard version nothing has been saved, we dare say that there is nothing better than OLYMPIA.

## SPECIFICATION

IP grade:	IP66, driver IP67
Lightsource:	LED, market leading efficiency
Surge protection:	10kV thru earth cable SCP/OTP
Electrical safety class:	I, with earth cable
Driver certificate:	ENEC
Ripple current:	<5%
Flicker:	Free from flicker, suitable for TV broadcasting
Versions:	2000 Watt and 1000 Watt
System for light control:	DALI, 0-10V, timer, dim- off, PWM, PC kommunikation, constant lumen, Life-varning
Efficiency, real lumen output:	at 4000K 143lm/W
Light color temperature:	Standard 4000K (other Kelvin on demand)
Color rendering index:	SDCM: CRI70 >5
Maintained luminous flux L90:	80,000h w/o CLO
Maintained luminous flux L80:	120,000h w/o CLO
Maintained luminous flux L70:	155,000h w/o CLO, IESNA LM80
Temperature range during operation:	1kW -40° till +35°C. 2kW -40° till +30°C
Use:	Avoid direct sunlight at luminaire during operation
Driver box:	External driver box
Mains voltage:	220-240 V AC/50-60 Hz
EMC:	Driver/luminaire EN55015, EN61000-2-3, EN61547
Optics:	4 different optics, optimized lenses S1, S2, S3, S4
Material:	High pressure die casted aluminum, SS/VFZ steel.
Weight:	1kW 22,2 kg, 2kW 32,4 kg. driver box 8kg/ 11,5kg
Housing color:	RAL 9006
Recommended position:	Height 6m–50m, distance from lighted target 100m Bracket for hanging luminaire alt. standing on beam.
Pre assembled installation cable:	Yes, standard 24m cable between luminaire & driver box. Short 230V mains cable included mounted in driver box. (DALI is connected separately in the driver box)



# DRIVERBOX, external mounting

